

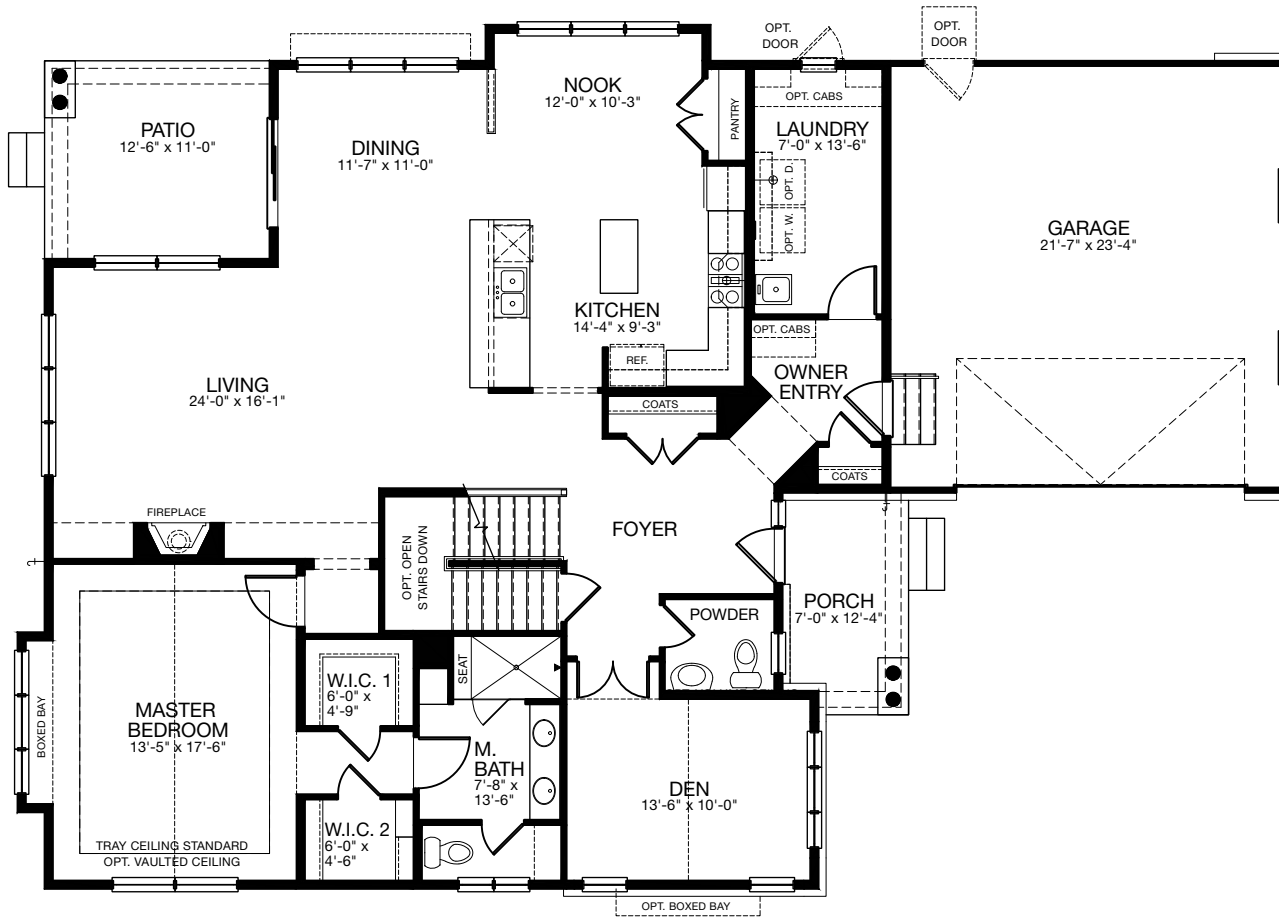


Ridgefield *Cottage*

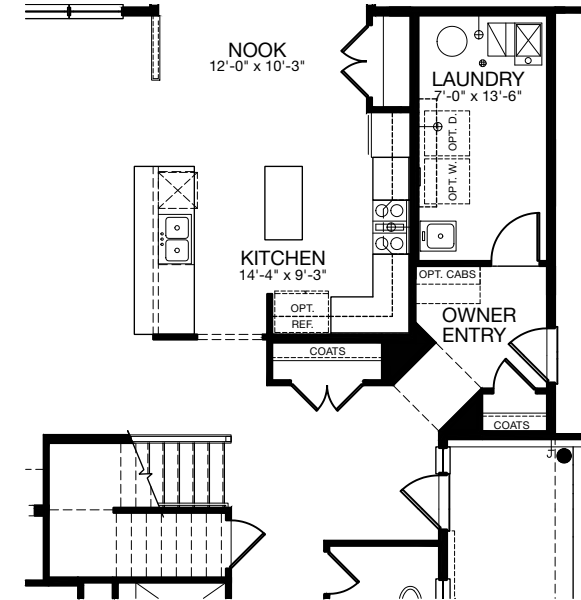


EDWARD R. JAMES COMPANIES
EXCEPTIONAL HOMES... EXCEPTIONAL PLACES

Ridgefield Cottage Main Floor



MAIN FLOOR COTTAGE
BASEMENT CONDITION



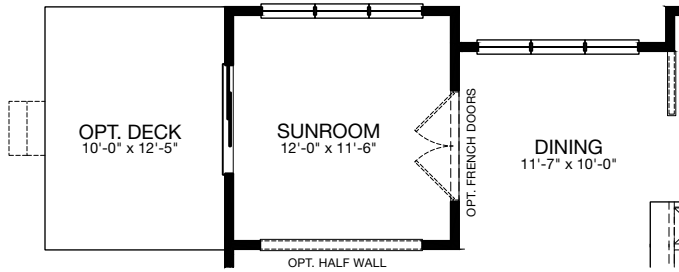
MAIN FLOOR
SLAB CONDITION



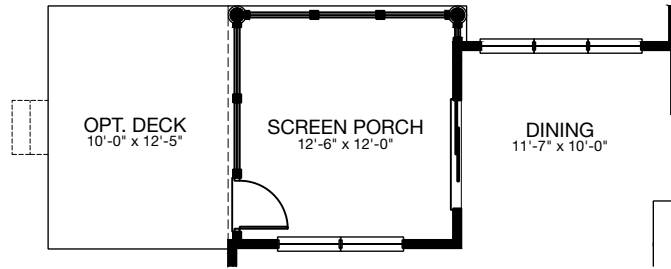
Plan, materials, prices and specifications are based on availability and subject to change without notice. Architectural, structural and other revisions may be made as are deemed necessary by the developer, builder, architect or as may be required by law. Images used for illustrative purposes only. ALL DIMENSIONS ARE APPROXIMATE. NOTE: Window placement determined by elevation style. Floor plans depict standard elevation only. Window well locations subject to change.

	SQ. FT
Main Floor	1955
Upper Floor	1127
Total	3082
Basement	1815
Garage	528

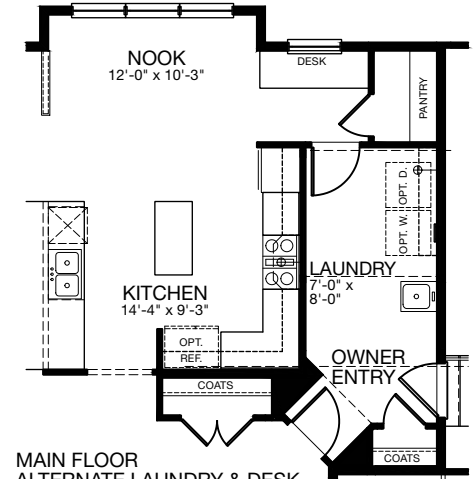
Ridgefield Cottage Main Floor Options



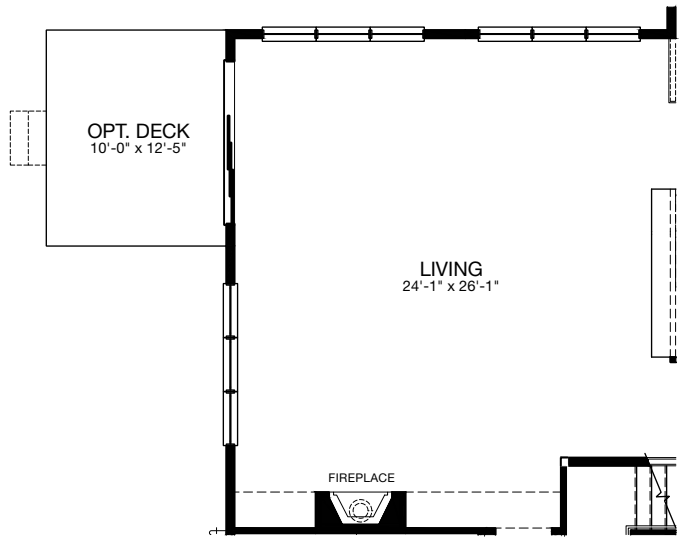
MAIN FLOOR
OPT. SUNROOM + 163 S.F.



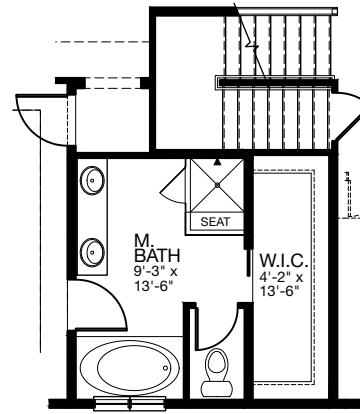
MAIN FLOOR
OPT. SCREEN PORCH + 163 S.F.



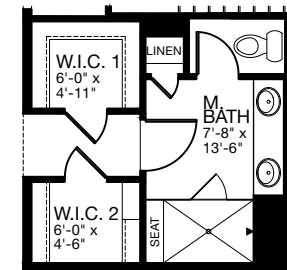
MAIN FLOOR
ALTERNATE LAUNDRY & DESK



MAIN FLOOR
OPT. EXTENDED LIVING ROOM + 125 S.F.



MAIN FLOOR
ALTERNATE MASTER BATH



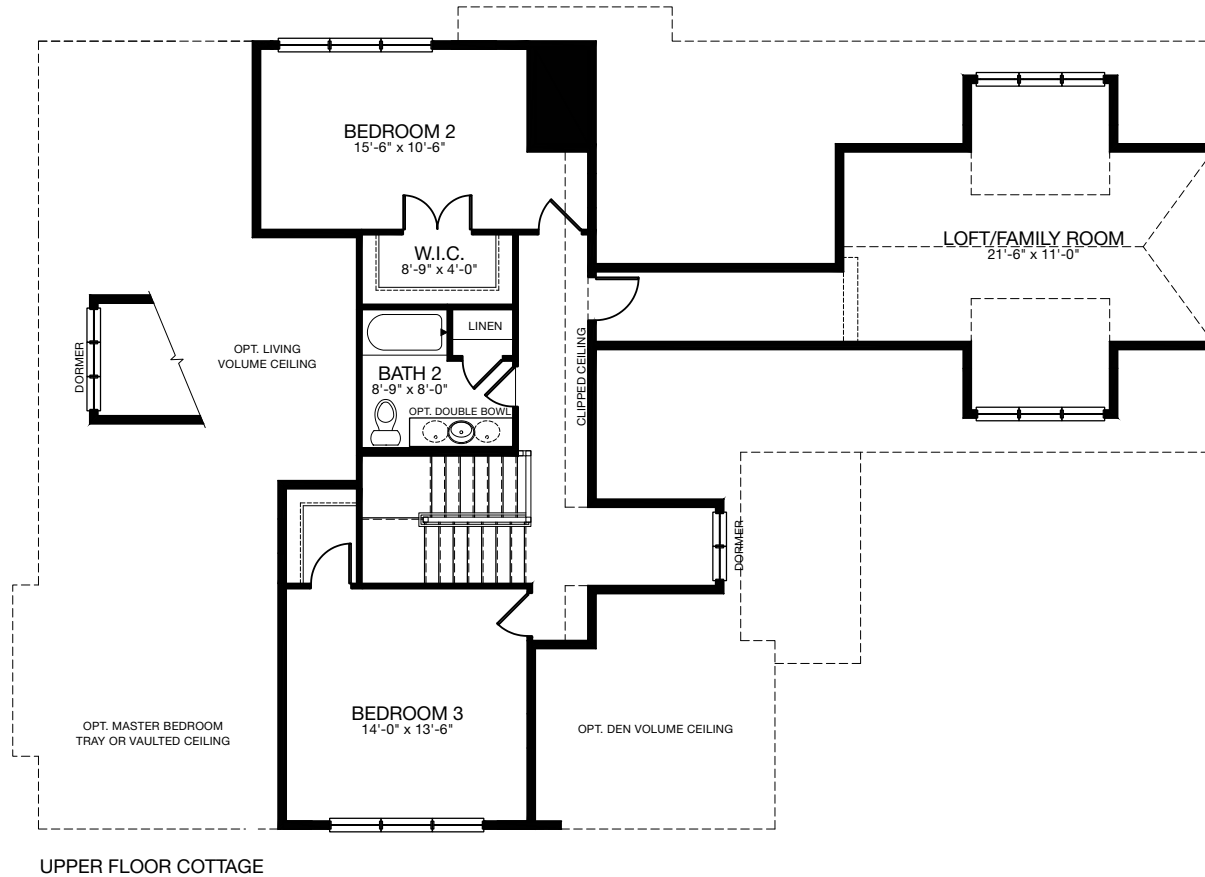
MAIN FLOOR
OPT. LUXURY MASTER BATH



Plan, materials, prices and specifications are based on availability and subject to change without notice. Architectural, structural and other revisions may be made as are deemed necessary by the developer, builder, architect or as may be required by law. Images used for illustrative purposes only. ALL DIMENSIONS ARE APPROXIMATE. NOTE: Window placement determined by elevation style. Floor plans depict standard elevation only. Window well locations subject to change.

	SQ. FT
Main Floor	1955
Upper Floor	1127
Total	3082
Basement	1815
Garage	528

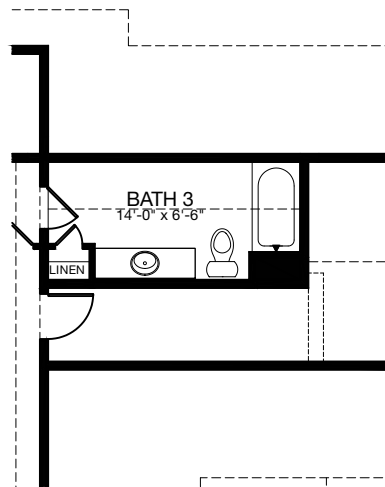
Ridgefield Cottage Upper Floor



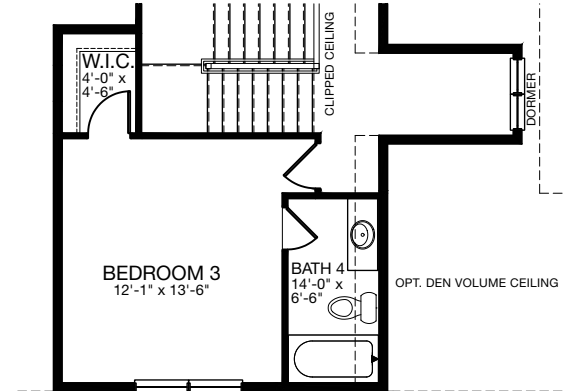
Plan, materials, prices and specifications are based on availability and subject to change without notice. Architectural, structural and other revisions may be made as are deemed necessary by the developer, builder, architect or as may be required by law. Images used for illustrative purposes only. ALL DIMENSIONS ARE APPROXIMATE. NOTE: Window placement determined by elevation style. Floor plans depict standard elevation only. Window well locations subject to change.

	SQ. FT
Main Floor	1955
Upper Floor	1127
Total	3082
Basement	1815
Garage	528

Ridgefield Cottage Upper Floor Options



UPPER FLOOR
OPT. BATH 3 + 108 S.F.



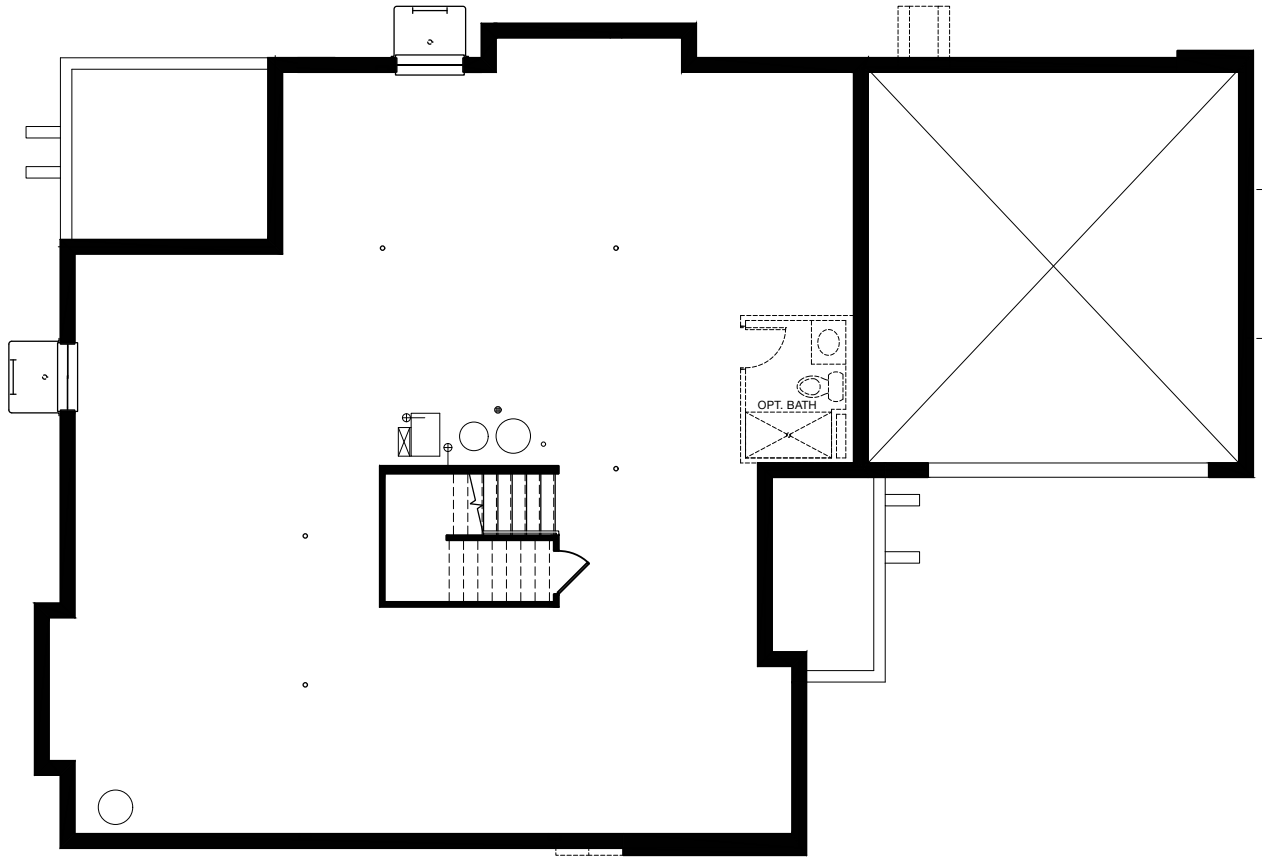
UPPER FLOOR
OPT. BATH 4 + 37 S.F.



Plan, materials, prices and specifications are based on availability and subject to change without notice. Architectural, structural and other revisions may be made as are deemed necessary by the developer, builder, architect or as may be required by law. Images used for illustrative purposes only. ALL DIMENSIONS ARE APPROXIMATE. NOTE: Window placement determined by elevation style. Floor plans depict standard elevation only. Window well locations subject to change.

	SQ. FT
Main Floor	1955
Upper Floor	1127
Total	3082
Basement	1815
Garage	528

Ridgefield Cottage Basement



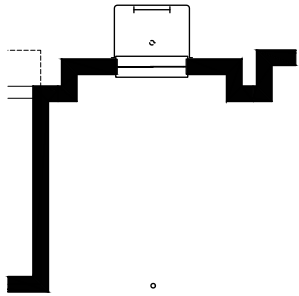
BASEMENT



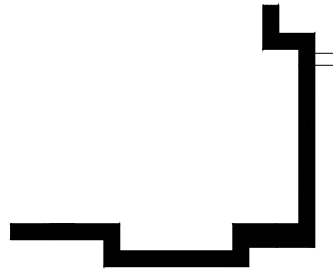
Plan, materials, prices and specifications are based on availability and subject to change without notice. Architectural, structural and other revisions may be made as are deemed necessary by the developer, builder, architect or as may be required by law. Images used for illustrative purposes only. ALL DIMENSIONS ARE APPROXIMATE. NOTE: Window placement determined by elevation style. Floor plans depict standard elevation only. Window well locations subject to change.

	SQ. FT
Main Floor	1955
Upper Floor	1127
Total	3082
Basement	1815
Garage	528

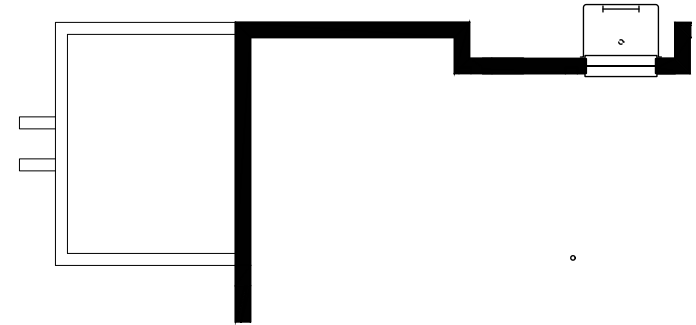
Ridgefield Cottage Basement Options



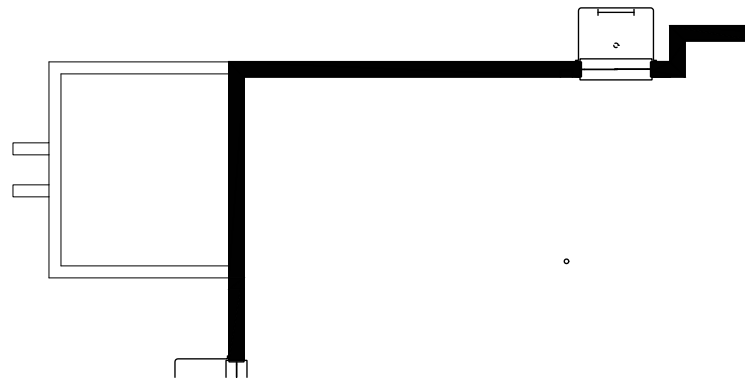
BASEMENT
OPTIONAL DINING ROOM BAY + 12 SQ. FT



BASEMENT
OPTIONAL DEN BAY + 9 SQ. FT



BASEMENT
OPTIONAL SUNROOM + 150 SQ. FT



BASEMENT
OPTIONAL EXTENDED LIVING ROOM + 128 SQ. FT



Plan, materials, prices and specifications are based on availability and subject to change without notice. Architectural, structural and other revisions may be made as are deemed necessary by the developer, builder, architect or as may be required by law. Images used for illustrative purposes only. ALL DIMENSIONS ARE APPROXIMATE. NOTE: Window placement determined by elevation style. Floor plans depict standard elevation only. Window well locations subject to change.

	SQ. FT
Main Floor	1955
Upper Floor	1127
Total	3082
Basement	1815
Garage	528

ANETS WOODS

Ridgefield Cottage



Ridgefield Cottage with Stone

1230 Voltz Road, Northbrook, IL 60062 | 847.955.1213 | www.anetswoods.com